
Could There Be
an SAT for India?

Agenda

- **Introductions**
- **Role of the SAT in US Higher Education**
- **High-Stakes Assessments in Universities in India-Current State**
- **High-Stakes Assessments in Universities in India-Solutions**

Panelists

Vineet Gupta

Founder and Pro-Vice Chancellor,
Ashoka University

Kapil Gabba

Head of Admissions
Shiv Nadar University

C Peter Magrath

President APLU
Author and International Consultant

Martha Pitts

Executive Director, Higher Education
College Board

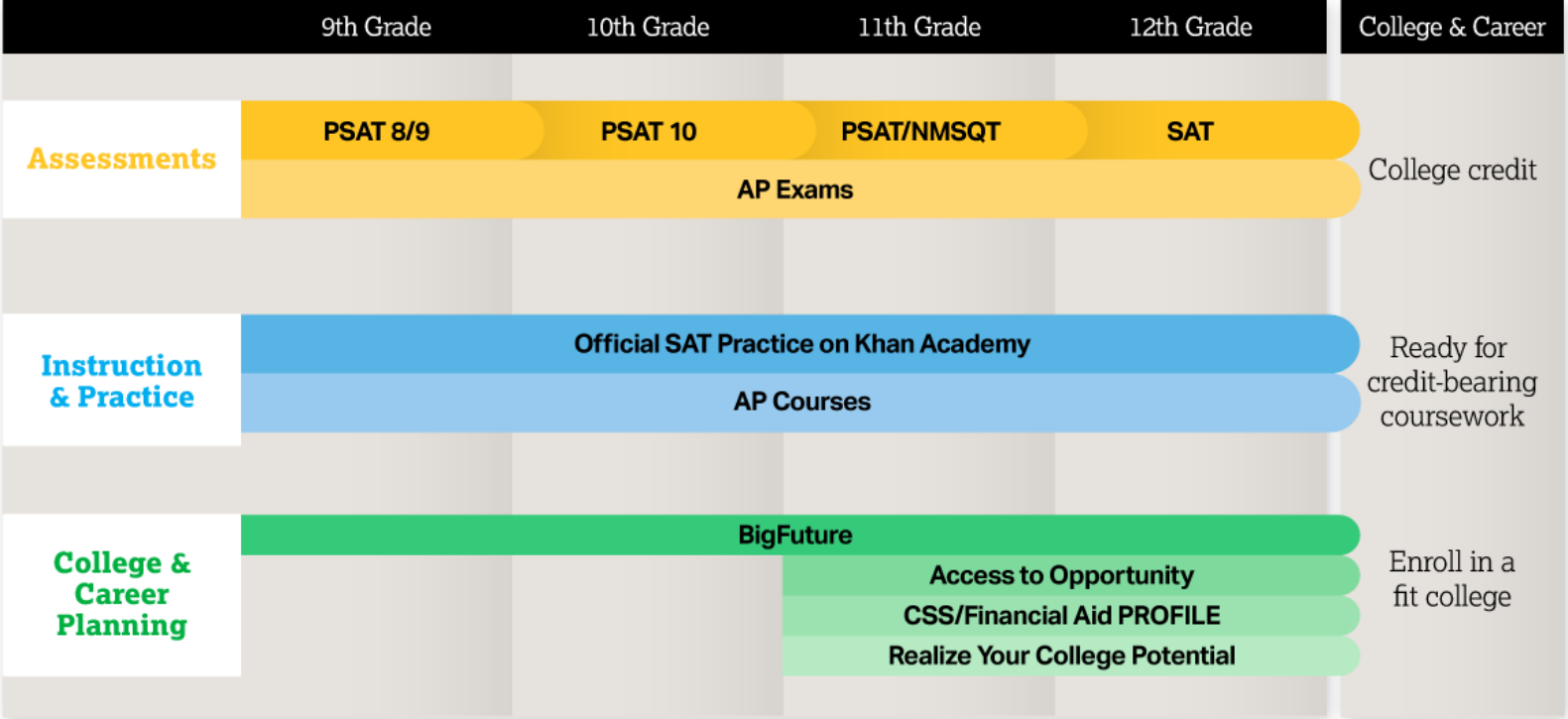
The College Board is a non-profit, independent, membership organization based in New York

-
- **The College Board was established in 1900 by a group of prominent U.S. universities**
 - To develop uniform admissions standards that universities would honor
 - To simplify and expand student access to higher education
 - To promote high quality academic competencies and prepare students for university
 - **Our membership is international – our member colleges, universities, and secondary schools hail from 60+ countries**
 - Our ~6,300 members are secondary schools, universities, and educational organizations worldwide
 - 5% of our members are from outside the United States
 - **College Board programs (SAT, AP, PSAT) are currently administered in nearly 180 countries.**
 - **Each year, the College Board serves:**
 - 7 million students and their parents
 - 23,000 secondary schools
 - 3,500 higher education institutions

Readiness through College Board



Opportunity Pathway





Apply Now

About us

Academics

Student Life at Ashoka

Prospective Students

Ashoka News



We take care of your financial needs. More than 50% of our students are on scholarships



Getting to Ashoka

Contact us

Virtual Tour

QUICK FACTS

- Established – 2011
- Campus – 286 acres
- Student : Faculty = 9.11 : 1
- Publications/Faculty = 23.58
- 198 Outstanding faculty members
- 2123 students (including 144 Ph.D. students)



SCHOOLS AT SNU

- School of Engineering
- School of Humanities & Social Sciences
- School of Natural Sciences
- School of Management & Entrepreneurship

SCHOOLS ENVISAGED

- School of Art, Design & Performing Arts
- School of Communication
- School of Law

KAPIL GABA, Founding Head – Admissions & Marketing

- responsible for establishing and executing a merit based admissions process to provide equal opportunity to every deserving aspirant find their place in the University

- built the selection process from a scratch which has paid off well in terms of student quality

- also leads the marketing and outreach efforts to ensure socio-economic and geographic diversity amongst students

- has spent twelve years working in the education sector in marketing, policy development, process management and strategy consulting.

Role of the SAT in US Higher Education

The College Board was established in 1900 by a group of prominent U.S. universities

-
- To develop uniform admissions standards that universities would honor
 - To simplify and expand student access to higher education
 - To promote high quality academic competencies and prepare students for university
 - The SAT[®] has grown to become the world's most widely used college entrance exam.
 - The SAT continues to evolve and improve to meet the needs of a dynamic education landscape.

Goals of the Redesigned SAT

-
- More focused on the few essential things that research shows matter most for college readiness
 - Assessment and instruction will work together
 - Open and clear, so students and educators know what to expect

Eight Key Changes to the SAT[®]



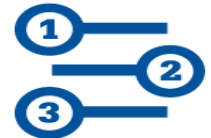
Words in Context



Command of Evidence



Essay Analyzing a Source



Math that Matters Most



Problems Grounded in
Real-World Contexts



Analysis in Science and in
History/Social Studies



Great Global Conversation



No Penalty for Guessing

New SAT and international students: *What we heard*

Results from the Oct. 2016 post-admin student survey:

- By a 15 to 1 margin, students said they **preferred the format of the new SAT** over the previous version of the test.
- 77% reported **feeling confident** going into the new SAT.
- 76% of students said the **vocabulary on the test would be useful** to them later in life.
- 71% said the **Writing and Language Test** was the same as or **easier** than they expected.
- 69% said the new test reflected what they're **learning in school**.

There are more than 3,900 accredited higher education institutions in the U.S.

- Each university may use a variety of factors & approaches to decide which students to admit
- This includes the use of College Board programs

The screenshot shows the College Board BigFuture website. At the top, there is a navigation bar with links for College Planning, YouCanGo!, SAT, AP, PSAT/NMSQT, CLEP, For Educators, and More. The College Board logo is in the top right. Below the navigation bar is a search bar with the text "Find Colleges, Advice and More" and a "Search" button. The main header includes "bigfuture by The College Board" and a navigation menu with "Get Started", "Find Colleges", "Explore Careers", "Pay for College", "Get In", and "Make a Plan". Below the header is a breadcrumb trail: "Home / Find Colleges / College Search". There are also social media sharing options for "ShareThis", "Like", and "1.1k".

The main content area is titled "College Search" and includes a "Save Selections" button and a "Clear All Selections" link. Below this is a "SELECT FILTERS" section with a list of filter categories: Type of School, Location, Campus & Housing, Majors & Learning Environment, Sports & Activities, Applying, Academic Credit, Paying, and Support Services.

A large green callout bubble is overlaid on the right side of the page, containing the text: "You have 3,952 college options. Choose a category on the left to find the right ones for you. We'll help along the way." A smaller pink callout bubble next to it says: "Not sure where to start? Go to College Search Step-by-Step, an interactive guide."

At the bottom of the page, there is a footer with "Welcome!" and buttons for "Sign up" and "Sign in". There are also links for "Me", "My Colleges", and "My Plan". A small text snippet at the bottom right reads: "What's college really like? Students and experts share the inside scoop. Watch video."

Importance of Factors in Admission Decisions at US Universities

National Association for College Admissions Counseling-2013

| Factor | Considerable Importance |
|--------------------------------|-------------------------|
| Grades in College Prep Courses | 81.5% |
| Strength of Curriculum | 63.7% |
| Admission Test Scores | 58.3% |
| Grades in All Courses | 51.5% |
| Essay or Writing Sample | 22.2% |

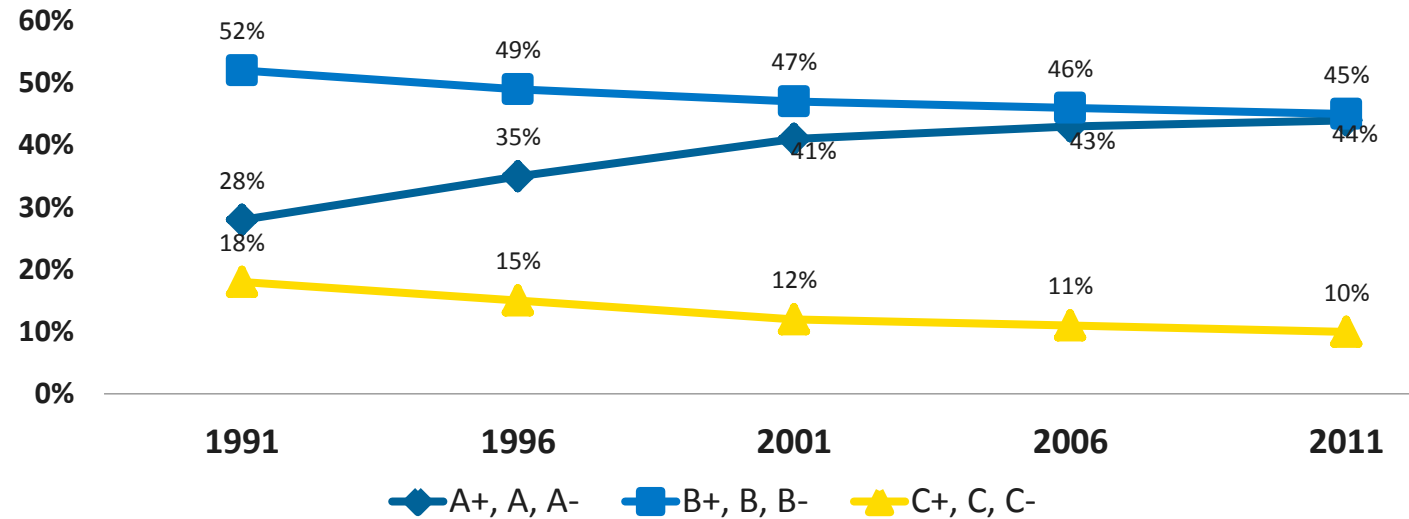
What US Enrollment Leaders Most wanted from the SAT

Validate High School GPA

High school grades are increasing over time

The need for a consistent national measure is more important than ever as high school grades have been increasing over time.

Percentage of Students by Self-Reported High School GPA



| | 1991 | 1996 | 2001 | 2006 | 2011 |
|---------------------------------|------|------|------|------|------|
| Grade Average for All Subjects* | 3.10 | 3.20 | 3.28 | 3.33 | 3.34 |

What US Enrollment Leaders Most wanted from the SAT

High Levels of Validity in predicting student academic achievement and success

Predictor(s)

Correlation(s)

1. HSGPA

0.48 (0.27)

2. SAT[®] EBRW

0.51 (0.33)

3. SAT Math

0.49 (0.30)

4. SAT EBRW, SAT Math

0.53 (0.35)

5. HSGPA, SAT EBRW, SAT Math

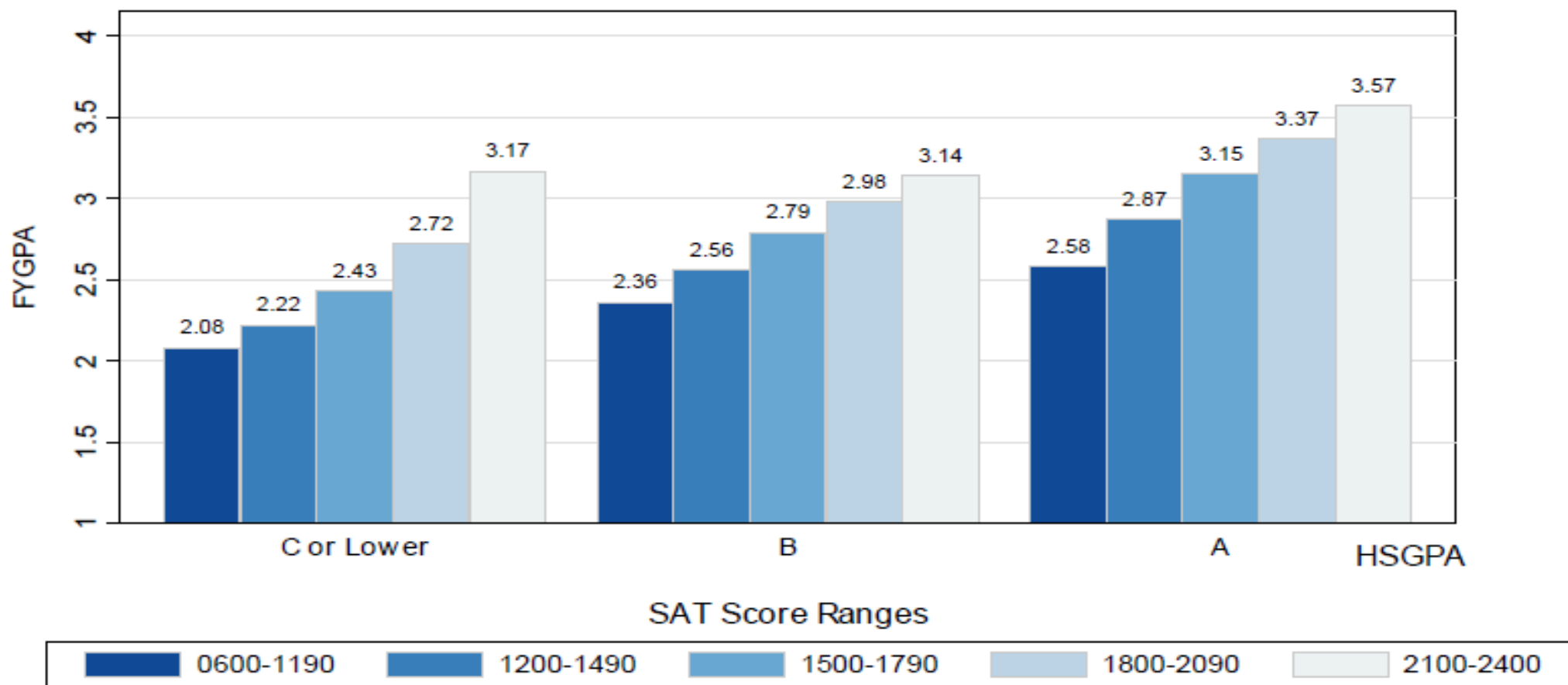
0.58 (0.40)

Preliminary Validity Study on New SAT

Note: Number of students (n_s) = 2,050. Pooled within-institution, restriction of range corrected correlations are presented. The raw correlations are shown in parentheses.

Figure 3.

Incremental validity of the SAT: Mean FYGPA by SAT score band controlling for HSGPA.



What US Enrollment Leaders Most wanted from the SAT

Assessment that is Fair

- Regular Curriculum Surveys
- Test Development Committees
- Pre-Test (variable section)
- Rigorous Psychometric Analysis

The SAT® is the most rigorously researched and designed standardized test in the world.

- **Every question is field-tested across the entire testing population**
 - All 50 U.S. states
 - Over 170 countries
- **Every question goes through a sensitivity review to avoid concerns with:**
 - Gender
 - Ethnicity/Race
 - Disabilities
 - Controversial topics like war, violence and politics

High-Stakes Assessments in Universities in India-

Current State

High-Stakes Assessments in Universities in India-

Solutions

Questions

For additional information about College Board programs, services & resources, please feel free to contact us:

International@collegeboard.org

About the Redesigned SAT[®]

**Evidence-Based
Reading and
Writing**

200-800 points

Math

200-800 points

Essay

(separate scores)

3 Hours

50 Minutes

SAT[®] Suite Scores

1 Total Score

400–1600 Scale

Total Score

2 Section Scores

200–800 Scale

Evidence-Based Reading and Writing

Math

3 Test Scores

10–40 Scale

Reading

Writing and Language

Math

2 Cross-Test Scores

10–40 Scale

Analysis in Science

Analysis in History/Social Studies

7 Subscores

1–15 Scale

Words in Context

Heart of Algebra

Command of Evidence

Problem Solving and Data Analysis

Expression of Ideas

Passport to Advanced Math

Standard English Conventions

3 Essay Scores (Optional)

2–8 Scale

Reading

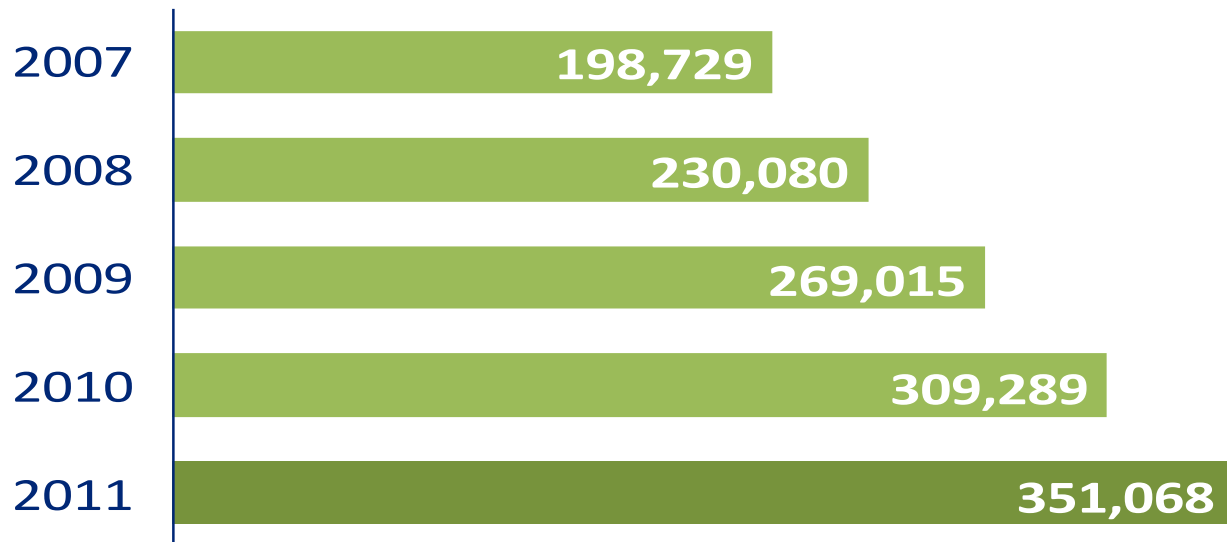
Analysis

Writing

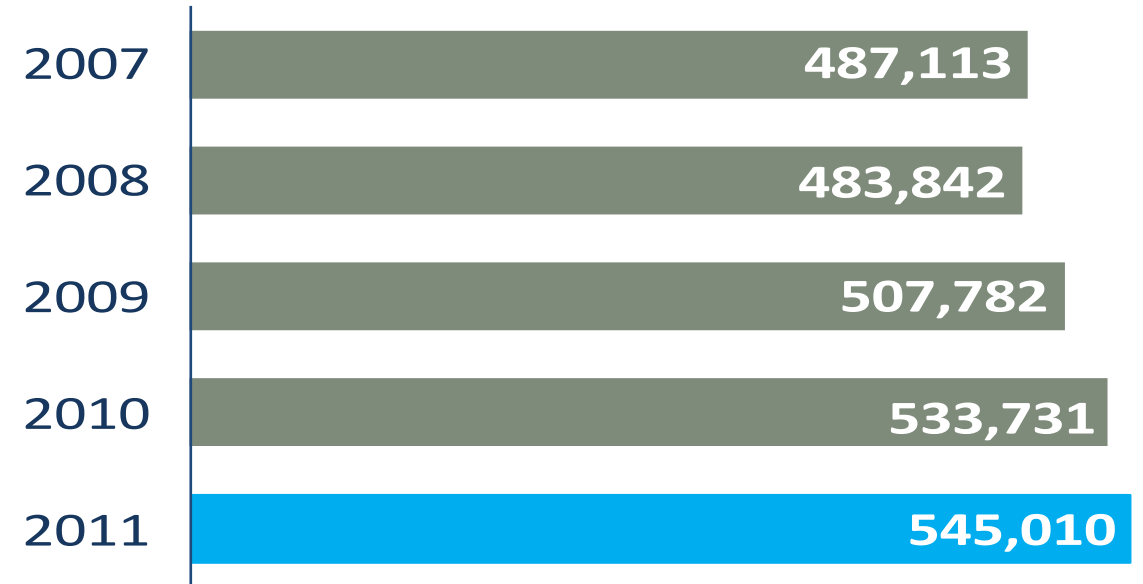
The SAT[®] Is reaching more underserved students


The SAT is reaching more low-income and first-generation students who are traditionally underserved in the college-going process.


2011 SAT Takers — Beneficiaries of the SAT Fee-Waiver Program



2011 SAT Takers — Prospective First-Generation College Goers



 **77% increase** in SAT Fee-Waiver usage since 2007
Represents more than \$37 million in fees and services

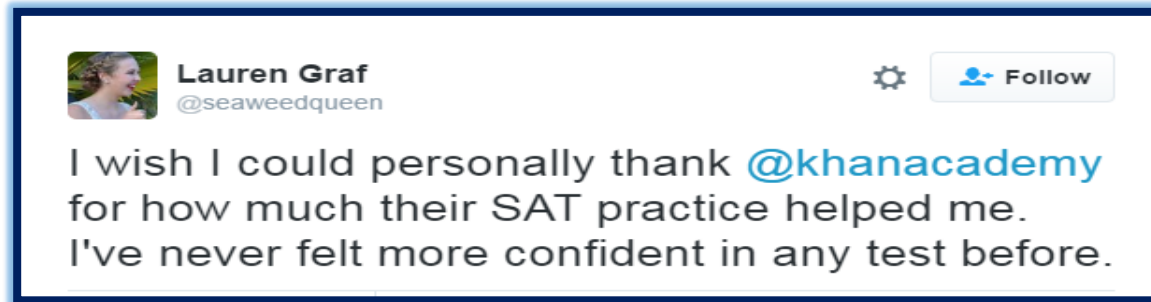


Students Answer The Call

2.3 million unique users

845,000 linked accounts

10% decline in commercial test prep usage



"If you don't have money to pay for a class, you're usually just stuck buying a book or you're on your own mostly, so this time it was really helpful that they had unlimited resources basically for anyone."
–Maia, Washington, DC

